



Durable Lightweight Tables & Chairs



Now featuring
MITY-EDGE™

Mity-Lite ABS Tables

Mity-Lite sets the market standard for durability with our lightweight ABS Folding Tables. Available in a multitude of sizes, shapes, textures and color options, this classic continues to meet any table need and delivers the best return on investment. Patented construction ensures edge and corner durability and a level table surface that provides moderate heat shielding. Representing a proprietary new edge construction and application process, ABS Round Folding Tables with MITY-EDGE™ are three times more durable than leading competitors. Backed by an unbeatable 15-year warranty and world-class customer support, Mity-Lite ABS tables are perfect for high-use, high-turn areas and provide years of reliable service.

Product Features

- Durable structure supports 2,000+ lbs (907kg)
- Round ABS Folding Tables with MITY-EDGE™ last 3X longer than leading competitors
- Lightweight design prevents injuries & claims
- Easy installation & takedown reduces labor costs & increases facility output
- Proven durable construction cuts replacement & repair costs
- Unique shapes allow for multiple setup configurations
- Broad offering of carts, including flat, upright, edge & stacking
- Made in USA & backed by an unbeatable 15-year warranty



Mity-Lite ABS Tables

Durable Lightweight Tables & Chairs

Rectangular			Circular		
36" x 96" (91cm x 244cm)	30" x 60" (76cm x 152cm)	24" x 60" (61cm x 152cm)	72" (183cm) Round	42" (107cm) Round Plycore	60" (152cm) Half Round
36" x 72" (91cm x 183cm)	30" x 48" (76cm x 122cm)	24" x 48" (61cm x 122cm)	66" (163cm) Round	36" (91cm) Round Plycore	36" (91cm) Quarter Round
36" x 36" (91cm x 91cm)	30" x 30" (76cm x 76cm)	18" x 96" (46cm x 244cm)	60" (152cm) Round	30" (76cm) Round Plycore	30" (76cm) Quarter Round
30" x 96" (76cm x 244cm)	24" x 96" (61cm x 244cm)	18" x 84" (46cm x 213cm)	54" (137cm) Round	24" (61cm) Round Plycore	36" x 72" (91cm x 183cm) Serpentine
30" x 84" (76cm x 213cm)	24" x 84" (61cm x 213cm)	18" x 72" (46cm x 183cm)	48" (122cm) Round	72" (183cm) Oval w/Extreme Edge	30" x 60" (76cm x 152cm) Serpentine
30" x 72" (76cm x 183cm)	24" x 72" (61cm x 183cm)	18" x 60" (46cm x 152cm)	48" (122cm) Round Plycore	72" (183cm) Half Round	



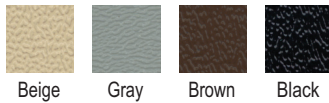
Textured beige surface; brown underside

Textured gray surface; black underside

The New Standard for Durability

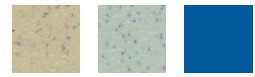
- Round ABS Folding Tables with MITY-EDGE™ last 3X longer than leading competitors
- 15-year warranty across entire ABS Table line
- More green through higher utilization of recycled material
- Streamlined style with new standard colors

Textured Tabletop Finishes



Beige Gray Brown Black

Smooth Tabletop Finishes



Speckled Beige Speckled Gray Royal Blue

Powder Coated Leg Finishes



Black Brown Gray

Stain-resistant ABS Surface

Thermoformed from high-impact ABS plastic in a variety of textures and colors

Hardwood Strength & Stability

Leg supports consist of alder for superior strength and performance

Patented Corner

High-impact injection molded edge and corner designed for shock absorption

Welded Trim

Trim is chemically welded to the entire perimeter of the table, fusing top and bottom plastic shells and sealing out moisture

Permanently Bonded

Top and bottom ABS shells are permanently bonded to sub-surface and strong inner hardwood supports

Strong Leg Attachments

16-gauge steel leg brackets are bolted metal-to-metal into steel T-nut fasteners

Heavy-duty ABS Edge

Reinforces top and bottom ABS shells, for a tough impact-resistant edge

Patented Sub-surface

Provides moderate heat shielding and keeps table surface smooth and flat

Supports Heavy Loads

Runners help sustain an evenly distributed load of 2,000+ lbs. (907kg)

